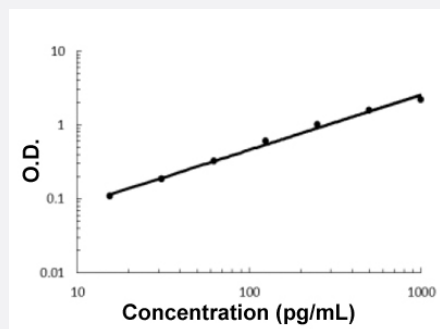


# Jam3 (Rat) ELISA Kit

Catalog # KA5756      Size 1 Kit

## Applications



The standard curve is for the purpose of illustration only and should not be used to calculate unknowns. A standard curve should be generated each time the assay is performed.

## Specification

<b>Product Description</b>	Jam3 (Rat) ELISA Kit is a sandwich enzyme-linked immunosorbent assay for the quantitative measurement of rat Jam3.
<b>Suitable Sample</b>	Cell Culture Supernates, Plasma (EDTA, Heparin), and Serum.
<b>Sample Volume</b>	100 $\mu$ L
<b>Label</b>	HRP-conjugated
<b>Detection Method</b>	Colorimetric
<b>Assay Type</b>	Quantitative
<b>Calibration Range</b>	15.6 to 1000 pg/mL
<b>Reactivity</b>	Rat
<b>Regulatory Status</b>	For research use only (RUO)
<b>Quality Control Testing</b>	Standard curve The standard curve is for the purpose of illustration only and should not be used to calculate unknowns. A standard curve should be generated each time the assay is performed.
<b>Storage Instruction</b>	Store at 4°C for 6 months, at -20°C for 12 months. Avoid multiple freeze-thaw cycles.

## Applications

- Quantification

## Gene Info — Jam3

Entrez GeneID	<a href="#">315509</a>
---------------	------------------------

Protein Accession#	<a href="#">Q68FQ2</a>
--------------------	------------------------

Gene Name	Jam3
-----------	------

Gene Alias	MGC94974
------------	----------

Gene Description	junctional adhesion molecule 3
------------------	--------------------------------

Gene Ontology	<a href="#">Hyperlink</a>
---------------	---------------------------

Other Designations	-
--------------------	---