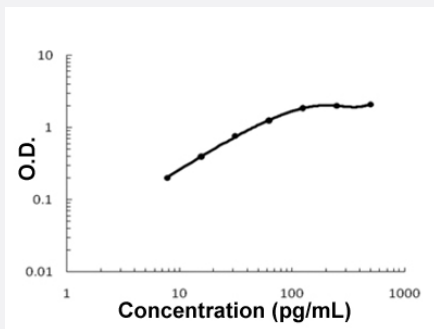


Ccl20 (Mouse) ELISA Kit

Catalog # KA5726 Size 1 Kit

Applications



The standard curve is for the purpose of illustration only and should not be used to calculate unknowns. A standard curve should be generated each time the assay is performed.

Specification

Product Description	Ccl20 (Mouse) ELISA Kit is a sandwich enzyme-linked immunosorbent assay for the quantitative measurement of mouse Ccl20.
Suitable Sample	Cell Culture Supernates, Cell Lysates, Plasma (Heparin, EDTA), and Serum.
Sample Volume	100 uL
Label	HRP-conjugated
Detection Method	Colorimetric
Assay Type	Quantitative
Calibration Range	7.8 to 500 pg/mL
Reactivity	Mouse
Regulatory Status	For research use only (RUO)
Quality Control Testing	Standard curve The standard curve is for the purpose of illustration only and should not be used to calculate unknowns. A standard curve should be generated each time the assay is performed.
Storage Instruction	Store at 4°C for 6 months, at -20°C for 12 months. Avoid multiple freeze-thaw cycles.

Applications

- Quantification

Gene Info — Ccl20

Entrez GeneID	20297
---------------	-----------------------

Protein Accession#	O89093
--------------------	------------------------

Gene Name	Ccl20
-----------	-------

Gene Alias	CKb4, LARC, MIP-3A, MIP-3[a], MIP3A, ST38, Scya20, exodus-1
------------	---

Gene Description	chemokine (C-C motif) ligand 20
------------------	---------------------------------

Gene Ontology	Hyperlink
---------------	---------------------------

Other Designations	OTTMUSP00000017965 small inducible cytokine subfamily A20
--------------------	---