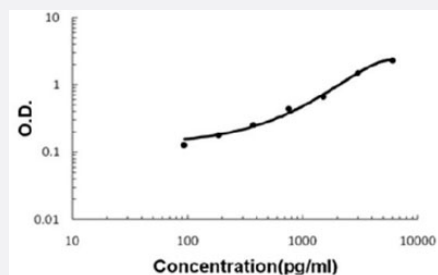


LGALS7 (Mouse) ELISA Kit

Catalog # KA5721 Size 1 Kit

Applications



The standard curve is for the purpose of illustration only and should not be used to calculate unknowns. A standard curve should be generated each time the assay is performed.

Specification

Product Description	LGALS7 (Mouse) ELISA Kit is a sandwich enzyme-linked immunosorbent assay for quantitative detection of mouse galectin-7 in cell culture supernates, cell lysates, serum and plasma (heparin, EDTA).
Suitable Sample	Cell culture supernates, cell lysates, serum and plasma (heparin, EDTA)
Sample Volume	100 μ L
Label	HRP-conjugated
Detection Method	Colorimetric
Assay Type	Quantitative
Calibration Range	93.8 to 6000 pg/mL
Reactivity	Mouse
Regulatory Status	For research use only (RUO)
Quality Control Testing	Standard curve The standard curve is for the purpose of illustration only and should not be used to calculate unknowns. A standard curve should be generated each time the assay is performed.
Storage Instruction	Store at 4°C for 6 months, at -20°C for 12 months. Avoid multiple freeze-thaw cycles.

Applications

- Quantification

Gene Info — Lgals7

Entrez GeneID	16858
---------------	-----------------------

Gene Name	Lgals7
-----------	--------

Gene Alias	Galectin-7, MGC151215, MGC151217
------------	----------------------------------

Gene Description	lectin, galactose binding, soluble 7
------------------	--------------------------------------

Gene Ontology	Hyperlink
---------------	---------------------------

Gene Summary	galactose binding
--------------	-------------------

Other Designations	OTTMUSP00000025970
--------------------	--------------------