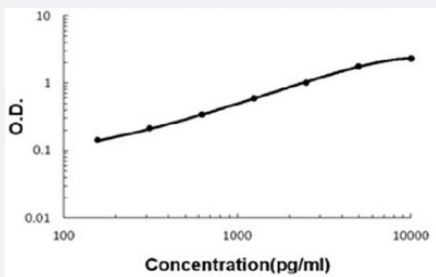


CD36 (Mouse) ELISA Kit

Catalog # KA5717 Size 1 Kit

Applications



The standard curve is for the purpose of illustration only and should not be used to calculate unknowns. A standard curve should be generated each time the assay is performed.

Specification

Product Description	CD36 (Mouse) ELISA Kit is a sandwich enzyme-linked immunosorbent assay for quantitative detection of mouse CD36 in cell culture supernates, cell lysates, serum and plasma (heparin, EDTA).
Suitable Sample	Cell culture supernates, cell lysates, serum and plasma (heparin, EDTA)
Sample Volume	100 μ L
Label	HRP-conjugated
Detection Method	Colorimetric
Assay Type	Quantitative
Calibration Range	156 to 10000 pg/mL
Reactivity	Mouse
Regulatory Status	For research use only (RUO)
Quality Control Testing	Standard curve The standard curve is for the purpose of illustration only and should not be used to calculate unknowns. A standard curve should be generated each time the assay is performed.
Storage Instruction	Store at 4°C for 6 months, at -20°C for 12 months. Avoid multiple freeze-thaw cycles.

Applications

- Quantification

Gene Info — Cd36

Entrez GeneID	12491
Gene Name	Cd36
Gene Alias	FAT, GPIV, Scarb3
Gene Description	CD36 antigen
Gene Ontology	Hyperlink
Other Designations	fatty acid translocase