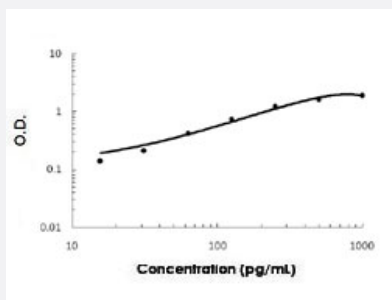


Areg (Mouse) ELISA Kit

Catalog # KA5716 Size 1 Kit

Applications



The standard curve is for the purpose of illustration only and should not be used to calculate unknowns. A standard curve should be generated each time the assay is performed.

Specification

Product Description	Areg (Mouse) ELISA Kit is a sandwich enzyme-linked immunosorbent assay for the quantitative measurement of mouse Areg in cell culture supernates, cell lysates, serum and plasma (heparin, EDTA).
Suitable Sample	Cell culture supernates, Cell lysates, Serum and Plasma (heparin, EDTA)
Sample Volume	100 uL
Label	HRP-conjugated
Detection Method	Colorimetric
Assay Type	Quantitative
Calibration Range	15.6 to 1000 pg/mL
Reactivity	Mouse
Regulatory Status	For research use only (RUO)
Quality Control Testing	Standard curve The standard curve is for the purpose of illustration only and should not be used to calculate unknowns. A standard curve should be generated each time the assay is performed.
Storage Instruction	Store at 4°C for 6 months, at -20°C for 12 months. Avoid multiple freeze-thaw cycles.

Applications

- Quantification

Gene Info — Areg

Entrez GeneID	11839
---------------	-----------------------

Gene Name	Areg
-----------	------

Gene Alias	AR, Sdgf
------------	----------

Gene Description	amphiregulin
------------------	--------------

Gene Ontology	Hyperlink
---------------	---------------------------

Other Designations	-
--------------------	---