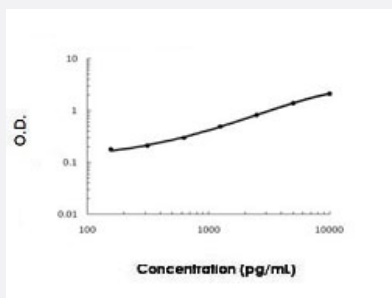


LGALS7 (Human) ELISA Kit

Catalog # KA5713 Size 1 Kit

Applications



The standard curve is for the purpose of illustration only and should not be used to calculate unknowns. A standard curve should be generated each time the assay is performed.

Specification

Product Description	LGALS7 (Human) ELISA Kit is a sandwich enzyme-linked immunosorbent assay for the quantitative measurement of human LGALS7 in cell culture supernates, cell lysates, serum and plasma (heparin, EDTA).
Suitable Sample	Cell culture supernates, Cell lysates, Serum and Plasma (heparin, EDTA)
Sample Volume	100 uL
Label	HRP-conjugated
Detection Method	Colorimetric
Assay Type	Quantitative
Calibration Range	156 to 10000 pg/mL
Reactivity	Human
Regulatory Status	For research use only (RUO)
Quality Control Testing	Standard curve The standard curve is for the purpose of illustration only and should not be used to calculate unknowns. A standard curve should be generated each time the assay is performed.
Storage Instruction	Store at 4°C for 6 months, at -20°C for 12 months. Avoid multiple freeze-thaw cycles.

Applications

- Quantification

Gene Info — LGALS7

Entrez GeneID	3963
Gene Name	LGALS7
Gene Alias	GAL7, LGALS7A
Gene Description	lectin, galactoside-binding, soluble, 7
Omim ID	600615
Gene Ontology	Hyperlink
Gene Summary	<p>The galectins are a family of beta-galactoside-binding proteins implicated in modulating cell-cell and cell-matrix interactions. Differential and in situ hybridization studies indicate that this lectin is specifically expressed in keratinocytes and found mainly in stratified squamous epithelium. A duplicate copy of this gene (GeneID:653499) is found adjacent to, but on the opposite strand on chromosome 19. [provided by RefSeq]</p>
Other Designations	galectin 7 galectin-7