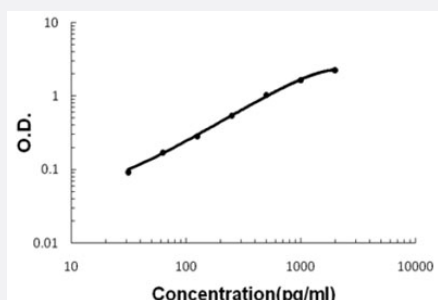


IL10 (Rat) ELISA Kit

Catalog # KA5695 Size 1 Kit

Applications



The standard curve is for the purpose of illustration only and should not be used to calculate unknowns. A standard curve should be generated each time the assay is performed.

Specification

Product Description	IL 10 (Rat) ELISA Kit is a sandwich enzyme-linked immunosorbent assay for quantitative detection of rat IL 10 in cell culture supernates, serum and plasma (EDTA).
Suitable Sample	Cell culture supernates, serum and plasma (EDTA)
Sample Volume	100 uL
Label	HRP-conjugated
Detection Method	Colorimetric
Assay Type	Quantitative
Calibration Range	31.2 to 2000 pg/mL
Reactivity	Rat
Regulatory Status	For research use only (RUO)
Quality Control Testing	Standard curve The standard curve is for the purpose of illustration only and should not be used to calculate unknowns. A standard curve should be generated each time the assay is performed.
Storage Instruction	Store at 4°C for 6 months, at -20°C for 12 months. Avoid multiple freeze-thaw cycles.

Applications

- Quantification

Gene Info — IL10

Entrez GeneID	25325
---------------	-----------------------

Gene Name	IL10
-----------	------

Gene Alias	IL10X
------------	-------

Gene Description	interleukin 10
------------------	----------------

Gene Ontology	Hyperlink
---------------	---------------------------

Other Designations	-
--------------------	---