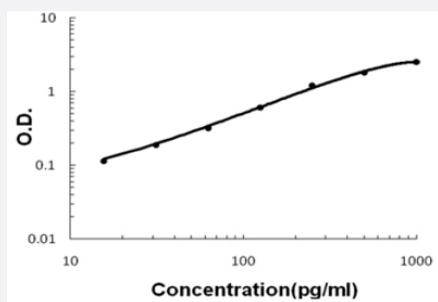


CXCL7 (Human) ELISA Kit

Catalog # KA5605

Size 1 Kit

Applications



The standard curve is for the purpose of illustration only and should not be used to calculate unknowns. A standard curve should be generated each time the assay is performed.

Specification

Product Description	CXCL7 (Human) ELISA Kit is a sandwich enzyme-linked immunosorbent assay for quantitative detection of human CXCL7 in cell culture supernates, cell lysates, serum and plasma (heparin, EDTA).
Suitable Sample	Cell culture supernates, cell lysates, serum and plasma (heparin, EDTA)
Sample Volume	100 uL
Label	HRP-conjugated
Detection Method	Colorimetric
Assay Type	Quantitative
Calibration Range	15.6 to 1000 pg/mL
Reactivity	Human
Regulatory Status	For research use only (RUO)
Quality Control Testing	Standard curve The standard curve is for the purpose of illustration only and should not be used to calculate unknowns. A standard curve should be generated each time the assay is performed.
Storage Instruction	Store at 4°C for six months. For long term storage store at -20°C. Avoid repeated freezing and thawing.

Applications

- Quantification

Gene Info — PPBP

Entrez GeneID	5473
Gene Name	PPBP
Gene Alias	B-TG1, Beta-TG, CTAP-III, CTAP3, CTAPIII, CXCL7, LA-PF4, LDGF, MDGF, NAP-2, PBP, SCY B7, TC1, TC2, TGB, TGB1, THBGB, THBGB1
Gene Description	pro-platelet basic protein (chemokine (C-X-C motif) ligand 7)
Omim ID	121010
Gene Ontology	Hyperlink
Gene Summary	The protein encoded by this gene is a platelet-derived growth factor that belongs to the CXC chemokine family. This growth factor is a potent chemoattractant and activator of neutrophils. It has been shown to stimulate various cellular processes including DNA synthesis, mitosis, glycolysis, intracellular cAMP accumulation, prostaglandin E2 secretion, and synthesis of hyaluronic acid and sulfated glycosaminoglycan. It also stimulates the formation and secretion of plasminogen activator by synovial cells. [provided by RefSeq]
Other Designations	CXC chemokine ligand 7 beta-thromboglobulin connective tissue-activating peptide III leukocyte-derived growth factor low-affinity platelet factor IV macrophage-derived growth factor neutrophil-activating peptide 2 neutrophil-activating peptide-2 platelet

Pathway

- [Chemokine signaling pathway](#)
- [Cytokine-cytokine receptor interaction](#)

Disease

- [Asthma](#)
- [Bronchiolitis](#)

- [Cardiovascular Diseases](#)
- [Diabetes Mellitus](#)
- [Edema](#)
- [Genetic Predisposition to Disease](#)
- [Infant](#)
- [Respiratory Syncytial Virus Infections](#)