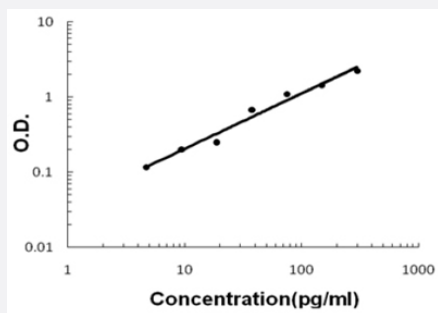


IL1A (Rat) ELISA Kit

Catalog # KA5598

Size 1 Kit

Applications



The standard curve is for the purpose of illustration only and should not be used to calculate unknowns. A standard curve should be generated each time the assay is performed.

Specification

Product Description	IL1A (Rat) ELISA Kit is a sandwich enzyme-linked immunosorbent assay for quantitative detection of rat IL-1 alpha in cell culture supernates and serum.
Suitable Sample	Cell culture supernates and serum
Sample Volume	100 uL
Label	HRP-conjugated
Detection Method	Colorimetric
Assay Type	Quantitative
Calibration Range	4.69 to 300 pg/mL
Reactivity	Rat
Regulatory Status	For research use only (RUO)
Quality Control Testing	Standard curve The standard curve is for the purpose of illustration only and should not be used to calculate unknowns. A standard curve should be generated each time the assay is performed.
Storage Instruction	Store at 4°C for six months. For long term storage store at -20°C. Avoid repeated freezing and thawing.

Applications

- Quantification

Gene Info — Il1a

Entrez GeneID	24493
Gene Name	Il1a
Gene Alias	IL-1 alpha
Gene Description	interleukin 1 alpha
Gene Ontology	Hyperlink
Other Designations	interleukin-1 alpha