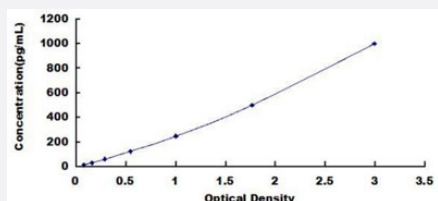


# IL15 (Mouse) ELISA Kit

Catalog # KA5583      Size 1 Kit

## Applications



The standard curve is for the purpose of illustration only and should not be used to calculate unknowns. A standard curve should be generated each time the assay is performed.

## Specification

|                                |  |
|--------------------------------|--|
| <b>Product Description</b>     | IL15 (Mouse) ELISA Kit is a sandwich enzyme-linked immunosorbent assay for quantitative measurement of mouse IL 15 in serum, plasma, tissue homogenates, cell lysates, cell culture supernatants or other biological fluids. |
| <b>Suitable Sample</b>         | Serum, plasma, tissue homogenates, cell lysates, cell culture supernatants or other biological fluids  |
| <b>Sample Volume</b>           | 100 $\mu$ L  |
| <b>Label</b>                   | HRP-conjugated   |
| <b>Detection Method</b>        | Colorimetric   |
| <b>Assay Type</b>              | Quantitative   |
| <b>Calibration Range</b>       | 15.6 to 1000 pg/mL   |
| <b>Reactivity</b>              | Mouse  |
| <b>Regulatory Status</b>       | For research use only (RUO)  |
| <b>Quality Control Testing</b> | Standard curve<br>The standard curve is for the purpose of illustration only and should not be used to calculate unknowns. A standard curve should be generated each time the assay is performed.                            |
| <b>Storage Instruction</b>     | Store at 4°C.  |

## Applications

- Quantification

## Gene Info — IL15

|               |                       |
|---------------|-----------------------|
| Entrez GeneID | <a href="#">16168</a> |
|---------------|-----------------------|

|           |      |
|-----------|------|
| Gene Name | IL15 |
|-----------|------|

|            |          |
|------------|----------|
| Gene Alias | AI503618 |
|------------|----------|

|                  |                |
|------------------|----------------|
| Gene Description | interleukin 15 |
|------------------|----------------|

|               |                           |
|---------------|---------------------------|
| Gene Ontology | <a href="#">Hyperlink</a> |
|---------------|---------------------------|

|                    |   |
|--------------------|---|
| Other Designations | - |
|--------------------|---|