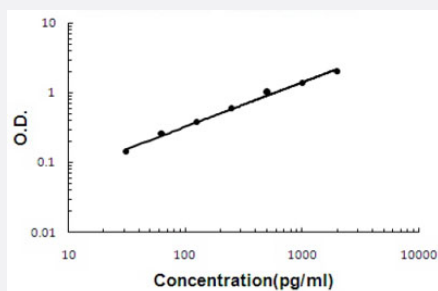


# IFNG (Mouse) ELISA Kit

Catalog # KA5573      Size 1 Kit

## Applications



The standard curve is for the purpose of illustration only and should not be used to calculate unknowns. A standard curve should be generated each time the assay is performed.

## Specification

<b>Product Description</b>	IFNG (Mouse) ELISA Kit is a sandwich enzyme-linked immunosorbent assay for quantitative detection of mouse IFN gamma in cell culture supernates and serum.
<b>Suitable Sample</b>	Cell culture supernates and serum
<b>Sample Volume</b>	100 uL
<b>Label</b>	HRP-conjugated
<b>Detection Method</b>	Colorimetric
<b>Assay Type</b>	Quantitative
<b>Calibration Range</b>	31.2 to 2000 pg/mL
<b>Reactivity</b>	Mouse
<b>Regulatory Status</b>	For research use only (RUO)
<b>Quality Control Testing</b>	Standard curve The standard curve is for the purpose of illustration only and should not be used to calculate unknowns. A standard curve should be generated each time the assay is performed.
<b>Storage Instruction</b>	Store at 4°C for six months. For long term storage store at -20°C. Avoid repeated freezing and thawing.

## Applications

- Quantification

## Gene Info — Ifng

Entrez GeneID	<a href="#">15978</a>
---------------	-----------------------

Gene Name	Ifng
-----------	------

Gene Alias	IFN-g, IFN-gamma, Ifg
------------	-----------------------

Gene Description	interferon gamma
------------------	------------------

Gene Ontology	<a href="#">Hyperlink</a>
---------------	---------------------------

Other Designations	gamma interferon
--------------------	------------------