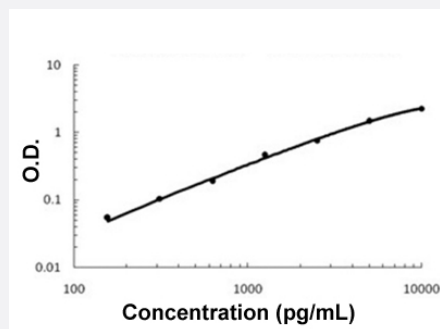


Timp2 (Mouse) ELISA Kit

Catalog # KA5563 Size 1 Kit

Applications



The standard curve is for the purpose of illustration only and should not be used to calculate unknowns. A standard curve should be generated each time the assay is performed.

Specification

Product Description	Timp2 (Mouse) ELISA Kit is a sandwich enzyme-linked immunosorbent assay for the quantitative measurement of mouse Timp2.
Suitable Sample	Cell Culture Supernates, Cell Lysates, Plasma (EDTA, Heparin) and Serum
Sample Volume	100 μ L
Label	HRP-conjugated
Detection Method	Colorimetric
Assay Type	Quantitative
Calibration Range	156 to 10000 pg/mL
Reactivity	Mouse
Regulatory Status	For research use only (RUO)
Quality Control Testing	Standard curve The standard curve is for the purpose of illustration only and should not be used to calculate unknowns. A standard curve should be generated each time the assay is performed.
Storage Instruction	Store at 4°C for 6 months, at -20°C for 12 months. Avoid multiple freeze-thaw cycles.

Applications

- Quantification

Gene Info — Timp2

Entrez GeneID	21858
---------------	-----------------------

Protein Accession#	P25785
--------------------	------------------------

Gene Name	Timp2
-----------	-------

Gene Alias	D11Bwg1104e, Timp-2
------------	---------------------

Gene Description	tissue inhibitor of metalloproteinase 2
------------------	---

Gene Ontology	Hyperlink
---------------	---------------------------

Other Designations	OTTMUSP00000004170 TIMP metalloproteinase inhibitor 2
--------------------	---