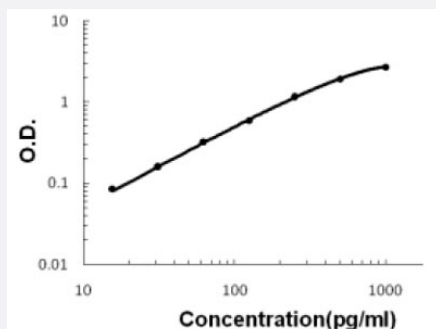


Bmp10 (Rat) ELISA Kit

Catalog # KA5548

Size 1 Kit

Applications



The standard curve is for the purpose of illustration only and should not be used to calculate unknowns. A standard curve should be generated each time the assay is performed.

Specification

Product Description	Bmp10 (Rat) ELISA Kit is a sandwich enzyme-linked immunosorbent assay for quantitative detection of rat Bmp10 in cell culture supernates, serum and plasma (heparin, EDTA, citrate).
Suitable Sample	Cell culture supernates, serum and plasma (heparin, EDTA, citrate)
Sample Volume	100 μ L
Label	HRP-conjugated
Detection Method	Colorimetric
Assay Type	Quantitative
Calibration Range	15.6 to 1000 pg/mL
Reactivity	Rat
Regulatory Status	For research use only (RUO)
Quality Control Testing	Standard curve The standard curve is for the purpose of illustration only and should not be used to calculate unknowns. A standard curve should be generated each time the assay is performed.
Storage Instruction	Store at 4°C for six months. For long term storage store at -20°C. Avoid repeated freezing and thawing.

Applications

- Quantification

Gene Info — Bmp10

Entrez GeneID	500245
Gene Name	Bmp10
Gene Alias	-
Gene Description	bone morphogenetic protein 10
Gene Ontology	Hyperlink
Other Designations	-