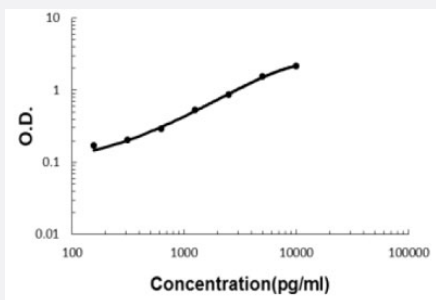


EPHA1 (Human) ELISA Kit

Catalog # KA5545 Size 1 Kit

Applications



The standard curve is for the purpose of illustration only and should not be used to calculate unknowns. A standard curve should be generated each time the assay is performed.

Specification

Product Description	EPHA1 (Human) ELISA Kit is a sandwich enzyme-linked immunosorbent assay for quantitative detection of human EPHA1 in cell culture supernates, serum and plasma (heparin, EDTA, citrate).
Suitable Sample	Cell culture supernates, serum and plasma (heparin, EDTA, citrate)
Sample Volume	100 uL
Label	HRP-conjugated
Detection Method	Colorimetric
Assay Type	Quantitative
Calibration Range	156 to 10000 pg/mL
Reactivity	Human
Regulatory Status	For research use only (RUO)
Quality Control Testing	Standard curve The standard curve is for the purpose of illustration only and should not be used to calculate unknowns. A standard curve should be generated each time the assay is performed.
Storage Instruction	Store at 4°C for six months. For long term storage store at -20°C. Avoid repeated freezing and thawing.

Applications

- [Quantification](#)

Gene Info — EPHA1

Entrez GeneID [2041](#)

Gene Name EPHA1

Gene Alias EPH, EPHT, EPHT1, MGC163163

Gene Description EPH receptor A1

Omim ID [179610](#)

Gene Ontology [Hyperlink](#)

Gene Summary This gene belongs to the ephrin receptor subfamily of the protein-tyrosine kinase family. EPH and EPH-related receptors have been implicated in mediating developmental events, particularly in the nervous system. Receptors in the EPH subfamily typically have a single kinase domain and an extracellular region containing a Cys-rich domain and 2 fibronectin type III repeats. The ephrin receptors are divided into 2 groups based on the similarity of their extracellular domain sequences and their affinities for binding ephrin-A and ephrin-B ligands. This gene is expressed in some human cancer cell lines and has been implicated in carcinogenesis. [provided by RefSeq]

Other Designations eph tyrosine kinase 1|ephrin receptor EphA1|ephrin type-A receptor 1|erythropoietin-producing hepatoma amplified sequence|oncogene EPH|soluble EPHA1 variant 1|soluble EPHA1 variant 2|tyrosine-protein kinase receptor EPH

Pathway

- [Axon guidance](#)

Disease

- [Cardiovascular Diseases](#)
- [Diabetes Mellitus](#)
- [Edema](#)