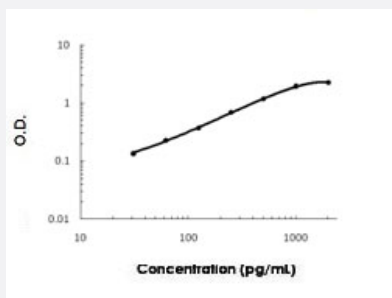


Cxadr (Rat) ELISA Kit

Catalog # KA5531 Size 1 Kit

Applications



The standard curve is for the purpose of illustration only and should not be used to calculate unknowns. A standard curve should be generated each time the assay is performed.

Specification

Product Description	Cxadr (Rat) ELISA Kit is a sandwich enzyme-linked immunosorbent assay for the quantitative measurement of rat Cxadr in cell culture supernates, serum and plasma (heparin, EDTA, citrate).
Suitable Sample	Cell culture supernates, Serum and Plasma (heparin, EDTA, citrate)
Sample Volume	100 uL
Label	HRP-conjugated
Detection Method	Colorimetric
Assay Type	Quantitative
Calibration Range	31.2 to 2000 pg/mL
Reactivity	Rat
Regulatory Status	For research use only (RUO)
Quality Control Testing	Standard curve The standard curve is for the purpose of illustration only and should not be used to calculate unknowns. A standard curve should be generated each time the assay is performed.
Storage Instruction	Store at 4°C for 6 months, at -20°C for 12 months. Avoid multiple freeze-thaw cycles.

Applications

- Quantification

Gene Info — Cxadr

Entrez GeneID	89843
---------------	-----------------------

Gene Name	Cxadr
-----------	-------

Gene Alias	Car1, MGC109536
------------	-----------------

Gene Description	coxsackie virus and adenovirus receptor
------------------	---

Gene Ontology	Hyperlink
---------------	---------------------------

Other Designations	-
--------------------	---