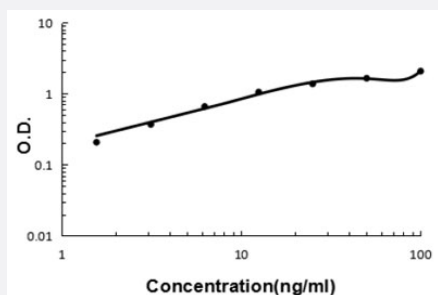


# Stat3 (Mouse) ELISA Kit

Catalog # KA5491

Size 1 Kit

## Applications



The standard curve is for the purpose of illustration only and should not be used to calculate unknowns. A standard curve should be generated each time the assay is performed.

## Specification

<b>Product Description</b>	Stat3 (Mouse) ELISA Kit is a sandwich enzyme-linked immunosorbent assay for quantitative detection of mouse AAT in cell culture supernates, serum and plasma (heparin, EDTA).
<b>Suitable Sample</b>	Cell culture supernates, serum and plasma (heparin, EDTA)
<b>Sample Volume</b>	100 uL
<b>Label</b>	HRP-conjugated
<b>Detection Method</b>	Colorimetric
<b>Assay Type</b>	Quantitative
<b>Calibration Range</b>	1.56 to 100 ng/mL
<b>Reactivity</b>	Mouse
<b>Regulatory Status</b>	For research use only (RUO)
<b>Quality Control Testing</b>	Standard curve The standard curve is for the purpose of illustration only and should not be used to calculate unknowns. A standard curve should be generated each time the assay is performed.
<b>Storage Instruction</b>	Store at 4°C for six months. For long term storage store at -20°C. Avoid repeated freezing and thawing.

## Applications

- Quantification

## Gene Info — Stat3

Entrez GeneID	<a href="#">20848</a>
Gene Name	Stat3
Gene Alias	1110034C02Rik, AW109958, Aprf
Gene Description	signal transducer and activator of transcription 3
Gene Ontology	<a href="#">Hyperlink</a>
Other Designations	OTTMUSP000000002052 OTTMUSP000000002053 acute phase response factor