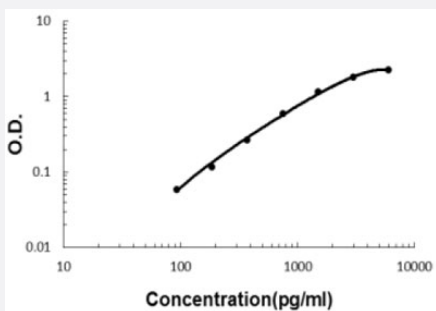


DPT (Human) ELISA Kit

Catalog # KA5474 Size 1 Kit

Applications



The standard curve is for the purpose of illustration only and should not be used to calculate unknowns. A standard curve should be generated each time the assay is performed.

Specification

Product Description	DPT (Human) ELISA Kit is a sandwich enzyme-linked immunosorbent assay for quantitative detection of human DPT in cell culture supernates, serum and plasma (heparin, EDTA).
Suitable Sample	Cell culture supernates, Serum and Plasma (heparin, EDTA)
Sample Volume	100 μ L
Label	HRP-conjugated
Detection Method	Colorimetric
Assay Type	Quantitative
Calibration Range	93.7 to 6000 pg/mL
Reactivity	Human
Regulatory Status	For research use only (RUO)
Quality Control Testing	Standard curve The standard curve is for the purpose of illustration only and should not be used to calculate unknowns. A standard curve should be generated each time the assay is performed.
Storage Instruction	Store at 4°C for six months. For long term storage store at -20°C. Avoid repeated freezing and thawing.

Applications

- Quantification

Gene Info — DPT

Entrez GeneID	1805
Gene Name	DPT
Gene Alias	TRAMP
Gene Description	dermatopontin
Omim ID	125597
Gene Ontology	Hyperlink
Gene Summary	Dermatopontin is an extracellular matrix protein with possible functions in cell-matrix interactions and matrix assembly. The protein is found in various tissues and many of its tyrosine residues are sulphated. Dermato pontin is postulated to modify the behavior of TGF-beta through interaction with decorin. [provided by RefSeq]
Other Designations	OTTHUMP00000032500 tyrosine-rich acidic matrix protein

Disease

- [Cardiovascular Diseases](#)
- [Genetic Predisposition to Disease](#)
- [Hypertension](#)
- [Osteoporosis](#)