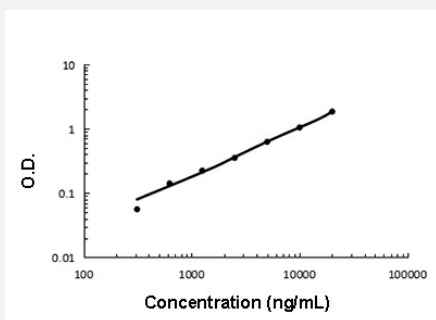


Efemp1 (Mouse) ELISA Kit

Catalog # KA5468

Size 1 Kit

Applications



The standard curve is for the purpose of illustration only and should not be used to calculate unknowns. A standard curve should be generated each time the assay is performed.

Specification

Product Description

Efemp1 (Mouse) ELISA Kit is a sandwich enzyme-linked immunosorbent assay for quantitative detection of mouse EFEMP1 in cell culture supernates, serum and plasma (heparin, EDTA).

Suitable Sample

Cell culture supernates, Serum and Plasma (heparin, EDTA)

Sample Volume

100 μ L

Label

HRP-conjugated

Detection Method

Colorimetric

Assay Type

Quantitative

Calibration Range

0.312 to 20 ng/mL

Reactivity

Mouse

Regulatory Status

For research use only (RUO)

Quality Control Testing

Standard curve

The standard curve is for the purpose of illustration only and should not be used to calculate unknowns. A standard curve should be generated each time the assay is performed.

Storage Instruction

Store at 4°C for six months. For long term storage store at -20°C. Avoid repeated freezing and thawing.

Applications

- Quantification

Gene Info — Efemp1

Entrez GeneID	216616
Gene Name	Efemp1
Gene Alias	MGC37612
Gene Description	epidermal growth factor-containing fibulin-like extracellular matrix protein 1
Gene Ontology	Hyperlink
Other Designations	-