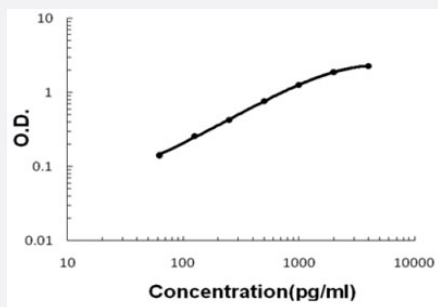


MCAM (Human) ELISA Kit

Catalog # KA5463

Size 1 Kit

Applications



The standard curve is for the purpose of illustration only and should not be used to calculate unknowns. A standard curve should be generated each time the assay is performed.

Specification

Product Description	MCAM (Human) ELISA Kit is a sandwich enzyme-linked immunosorbent assay for quantitative detection of human MCAM in cell culture supernates and serum.
Suitable Sample	Cell culture supernates and serum
Sample Volume	100 μ L
Label	HRP-conjugated
Detection Method	Colorimetric
Assay Type	Quantitative
Calibration Range	62.5 to 4000 pg/mL
Reactivity	Human
Regulatory Status	For research use only (RUO)
Quality Control Testing	Standard curve The standard curve is for the purpose of illustration only and should not be used to calculate unknowns. A standard curve should be generated each time the assay is performed.
Storage Instruction	Store at 4°C for six months. For long term storage store at -20°C. Avoid repeated freezing and thawing.

Applications

- Quantification

Gene Info — MCAM

Entrez GeneID	4162
Gene Name	MCAM
Gene Alias	CD146, MUC18
Gene Description	melanoma cell adhesion molecule
Omim ID	155735
Gene Ontology	Hyperlink
Other Designations	Gicerin melanoma adhesion molecule