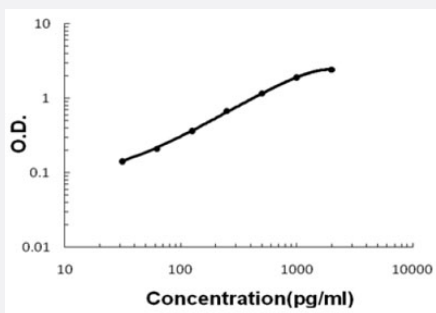


CDCP1 (Human) ELISA Kit

Catalog # KA5462 Size 1 Kit

Applications



The standard curve is for the purpose of illustration only and should not be used to calculate unknowns. A standard curve should be generated each time the assay is performed.

Specification

Product Description	CDCP1 (Human) ELISA Kit is a sandwich enzyme-linked immunosorbent assay for quantitative detection of human CDCP1 in cell culture supernates, serum and plasma (heparin, EDTA).
Suitable Sample	Cell culture supernates, Serum and Plasma (heparin, EDTA)
Sample Volume	100 μ L
Label	HRP-conjugated
Detection Method	Colorimetric
Assay Type	Quantitative
Calibration Range	31.2 to 2000 pg/mL
Reactivity	Human
Regulatory Status	For research use only (RUO)
Quality Control Testing	Standard curve The standard curve is for the purpose of illustration only and should not be used to calculate unknowns. A standard curve should be generated each time the assay is performed.
Storage Instruction	Store at 4°C for six months. For long term storage store at -20°C. Avoid repeated freezing and thawing.

Applications

- Quantification

Gene Info — CDCP1

Entrez GeneID	64866
Gene Name	CDCP1
Gene Alias	CD318, SIMA135, TRASK
Gene Description	CUB domain containing protein 1
Gene Ontology	Hyperlink
Gene Summary	<p>The protein encoded by this gene is a transmembrane protein containing three extracellular CUB domains. This protein is found to be overexpressed in colon and lung cancers. Its expression level is correlated with the metastatic ability of carcinoma cells. This protein is located on the cell surface. It has been shown to be tyrosine phosphorylated in a cancer cell line. Alternatively spliced transcript variants encoding distinct isoforms have been reported. [provided by RefSeq]</p>
Other Designations	CUB domain-containing protein 1 OTTHUMP00000164120 transmembrane and associated with src kinases