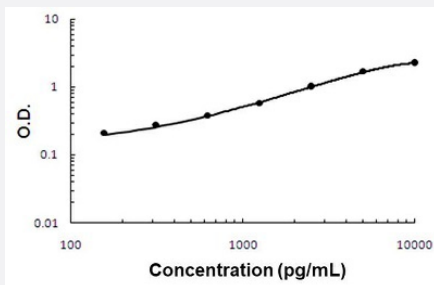


# CST1 (Human) ELISA Kit

Catalog # KA5451      Size 1 Kit

## Applications



The standard curve is for the purpose of illustration only and should not be used to calculate unknowns. A standard curve should be generated each time the assay is performed.

## Specification

<b>Product Description</b>	CST1 (Human) ELISA kit is a sandwich enzyme-linked immunosorbent assay for the quantitative measurement of human CST1 in cell culture supernatants, serum, plasma (heparin, EDTA), saliva and urine.
<b>Suitable Sample</b>	Cell Culture Supernatants, Plasma (heparin, EDTA), Saliva, Serum, Urine
<b>Sample Volume</b>	100 $\mu$ L
<b>Label</b>	HRP-conjugated
<b>Detection Method</b>	Colorimetric
<b>Assay Type</b>	Quantitative
<b>Calibration Range</b>	156-10000 pg/mL
<b>Reactivity</b>	Human
<b>Regulatory Status</b>	For research use only (RUO)
<b>Quality Control Testing</b>	Standard curve The standard curve is for the purpose of illustration only and should not be used to calculate unknowns. A standard curve should be generated each time the assay is performed.

**Storage Instruction**

Store at 4°C for 6 months or at -20°C for 12 months. Avoid repeated freeze-thaw cycles. Centrifuge tubes briefly to spin down all components to the bottom before opening.

## Applications

- Quantification

## Gene Info — CST1

**Entrez GeneID** [1469](#)

**Gene Name** CST1

**Gene Alias** -

**Gene Description** cystatin SN

**Omim ID** [123855](#)

**Gene Ontology** [Hyperlink](#)

**Gene Summary** The cystatin superfamily encompasses proteins that contain multiple cystatin-like sequences. Some of the members are active cysteine protease inhibitors, while others have lost or perhaps never acquired this inhibitory activity. There are three inhibitory families in the superfamily, including the type 1 cystatins (stefins), type 2 cystatins and the kininogens. The type 2 cystatin proteins are a class of cysteine proteinase inhibitors found in a variety of human fluids and secretions, where they appear to provide protective functions. The cystatin locus on chromosome 20 contains the majority of the type 2 cystatin genes and pseudogenes. This gene is located in the cystatin locus and encodes a cysteine proteinase inhibitor found in saliva, tears, urine, and seminal fluid. [provided by RefSeq]

**Other Designations** OTTHUMP00000030444|OTTHUMP00000164184|cystatin 1|cystatin SA-I|cysteine proteinase inhibitor, type 2 family

## Disease

- [Diabetes Mellitus](#)
- [Genetic Predisposition to Disease](#)
- [Insulin Resistance](#)