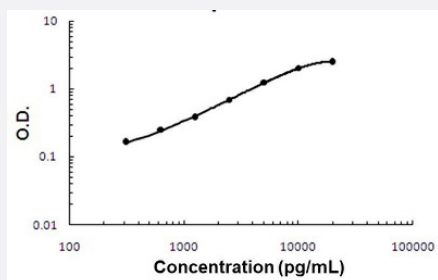


CFP (Human) ELISA Kit

Catalog # KA5450

Size 1 Kit

Applications



The standard curve is for the purpose of illustration only and should not be used to calculate unknowns. A standard curve should be generated each time the assay is performed.

Specification

Product Description	CFP (Human) ELISA kit is a sandwich enzyme-linked immunosorbent assay for the quantitative measurement of human CFP in cell culture supernatants, serum and plasma (heparin, EDTA).
Suitable Sample	Cell Culture Supernatants, Plasma (heparin, EDTA), Serum
Sample Volume	100 μ L
Label	HRP-conjugated
Detection Method	Colorimetric
Assay Type	Quantitative
Calibration Range	312 to 20000 pg/mL
Reactivity	Human
Regulatory Status	For research use only (RUO)
Quality Control Testing	Standard curve The standard curve is for the purpose of illustration only and should not be used to calculate unknowns. A standard curve should be generated each time the assay is performed.
Storage Instruction	Store at 4°C for 6 months or at -20°C for 12 months. Avoid repeated freeze-thaw cycles. Centrifuge tubes briefly to spin down all components to the bottom before opening.

Applications

- Quantification

Gene Info — CFP

Entrez GeneID	5199
Gene Name	CFP
Gene Alias	BFD, PFC, PFD, PROPERDIN
Gene Description	complement factor properdin
Omim ID	300383 312060
Gene Ontology	Hyperlink
Gene Summary	<p>This gene encodes a plasma glycoprotein that positively regulates the alternative complement pathway of the innate immune system. This protein binds to many microbial surfaces and apoptotic cells and stabilizes the C3- and C5-convertase enzyme complexes in a feedback loop that ultimately leads to formation of the membrane attack complex and lysis of the target cell. Mutations in this gene result in two forms of properdin deficiency, which results in high susceptibility to meningococcal infections. Multiple alternatively spliced variants, encoding the same protein, have been identified</p>
Other Designations	properdin P factor, complement

Disease

- [Alzheimer disease](#)
- [Cardiovascular Diseases](#)
- [Cerebral Amyloid Angiopathy](#)
- [Diabetes Mellitus](#)
- [Edema](#)
- [Genetic Predisposition to Disease](#)
- [Neuroblastoma](#)