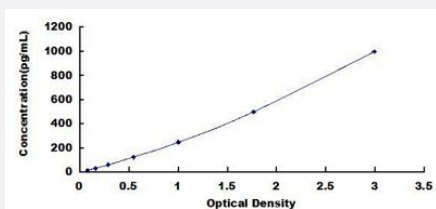


Eg (Mouse) ELISA Kit

Catalog # KA5436

Size 1 Kit

Applications



The standard curve is for the purpose of illustration only and should not be used to calculate unknowns. A standard curve should be generated each time the assay is performed.

Specification

Product Description

Eg (Mouse) ELISA Kit is a sandwich enzyme-linked immunosorbent assay for quantitative measurement of mouse Eg in serum, plasma, tissue homogenates, cell lysates, cell culture supernatants and other biological fluids.

Suitable Sample

Serum, Plasma, Tissue homogenates, Cell lysates, Cell culture supernatants, Biological fluids.

Sample Volume

100 μ L

Label

HRP-conjugated

Detection Method

Colorimetric

Assay Type

Quantitative

Calibration Range

15.625 to 1,000 pg/mL

Reactivity

Mouse

Regulatory Status

For research use only (RUO)

Quality Control Testing

Standard Curve

The standard curve is for the purpose of illustration only and should not be used to calculate unknowns. A standard curve should be generated each time the assay is performed.

Storage Instruction

Store at -20°C.
Aliquot to avoid repeated freezing and thawing.

Applications

- Quantification

Gene Info — Es22

Entrez GeneID	13897
----------------------	-----------------------

Gene Name	Es22
------------------	------

Gene Alias	Eg, Es-22, egasyn
-------------------	-------------------

Gene Description	esterase 22
-------------------------	-------------

Gene Ontology	Hyperlink
----------------------	---------------------------

Other Designations	OTTMUSP00000029366
---------------------------	--------------------