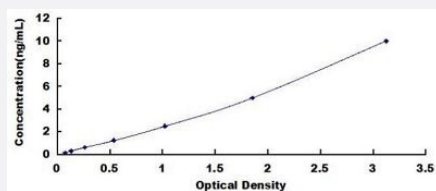


Bmpr1a (Mouse) ELISA Kit

Catalog # KA5430

Size 1 Kit

Applications



The standard curve is for the purpose of illustration only and should not be used to calculate unknowns. A standard curve should be generated each time the assay is performed.

Specification

Product Description	Bmpr1a (Mouse) ELISA Kit is a sandwich enzyme-linked immunosorbent assay for quantitative measurement of mouse Bmpr1a in tissue homogenates, cell lysates and other biological fluids.
Suitable Sample	Tissue homogenates, Cell lysates, Biological fluids.
Sample Volume	100 uL
Label	HRP-conjugated
Detection Method	Colorimetric
Assay Type	Quantitative
Calibration Range	0.156 to 10 ng/mL
Reactivity	Mouse
Regulatory Status	For research use only (RUO)
Quality Control Testing	Standard Curve The standard curve is for the purpose of illustration only and should not be used to calculate unknowns. A standard curve should be generated each time the assay is performed.
Storage Instruction	Store at -20°C. Aliquot to avoid repeated freezing and thawing.

Applications

- Quantification

Gene Info — Bmpr1a

Entrez GeneID	12166
Gene Name	Bmpr1a
Gene Alias	1110037I22Rik, ALK3, AU045487, BMPR-1A, Bmpr
Gene Description	bone morphogenetic protein receptor, type 1A
Gene Ontology	Hyperlink
Gene Summary	O
Other Designations	-