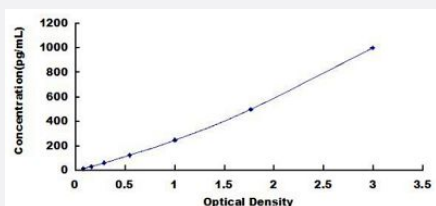


Fgf6 (Mouse) ELISA Kit

Catalog # KA5426 Size 1 Kit

Applications



The standard curve is for the purpose of illustration only and should not be used to calculate unknowns. A standard curve should be generated each time the assay is performed.

Specification

Product Description	Fgf6 (Mouse) ELISA Kit is a sandwich enzyme-linked immunosorbent assay for quantitative measurement of mouse Fgf6 in serum, plasma or other biological fluids.
Suitable Sample	Serum, Plasma, Biological fluids
Sample Volume	100 uL
Label	HRP-conjugated
Detection Method	Colorimetric
Assay Type	Quantitative
Calibration Range	15.6 to 1,000 pg/mL
Reactivity	Mouse
Regulatory Status	For research use only (RUO)
Quality Control Testing	Standard Curve The standard curve is for the purpose of illustration only and should not be used to calculate unknowns. A standard curve should be generated each time the assay is performed.
Storage Instruction	Store at -20°C. Aliquot to avoid repeated freezing and thawing.

Applications

- Quantification

Gene Info — Fgf6

Entrez GeneID	14177
---------------	-----------------------

Gene Name	Fgf6
-----------	------

Gene Alias	Fgf-6
------------	-------

Gene Description	fibroblast growth factor 6
------------------	----------------------------

Gene Ontology	Hyperlink
---------------	---------------------------

Other Designations	-
--------------------	---