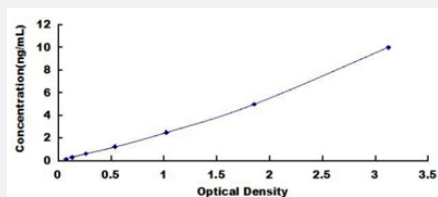


# BDNF (Mouse) ELISA Kit

Catalog # KA5425      Size 1 Kit

## Applications



The standard curve is for the purpose of illustration only and should not be used to calculate unknowns. A standard curve should be generated each time the assay is performed.

## Specification

<b>Product Description</b>	BDNF (Mouse) ELISA Kit is a sandwich enzyme-linked immunosorbent assay for quantitative detection of mouse BDNF in serum, plasma, tissue homogenates, cell lysates, cell culture supernatants and other biological fluids.
<b>Suitable Sample</b>	Serum, plasma, tissue homogenates, cell lysates, cell culture supernatants and other biological fluids
<b>Sample Volume</b>	100 $\mu$ L
<b>Label</b>	HRP-conjugated
<b>Detection Method</b>	Colorimetric
<b>Assay Type</b>	Quantitative
<b>Calibration Range</b>	0.156 to 10 ng/mL
<b>Reactivity</b>	Mouse
<b>Regulatory Status</b>	For research use only (RUO)
<b>Storage Instruction</b>	Store the kit at -20°C. For best results, please store the components as described in the protocol. Avoid repeated freezing and thawing.

## Applications

- Quantification

## Gene Info — Bdnf

Entrez GeneID	<a href="#">12064</a>
Gene Name	Bdnf
Gene Alias	-
Gene Description	brain derived neurotrophic factor
Gene Ontology	<a href="#">Hyperlink</a>
Other Designations	OTTMUSP00000016087 OTTMUSP00000016088 OTTMUSP00000016089 OTTMUSP00000016090 OTTMUSP00000016091 OTTMUSP00000016092 OTTMUSP00000016093 OTTMUSP00000016094 OTTMUSP00000016095 OTTMUSP00000016096 anorexia BDNF brain-derived neurotrophic factor