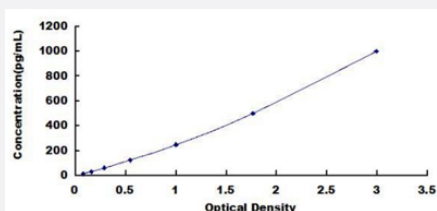


# IFNb (Mouse) ELISA Kit

Catalog # KA5421      Size 1 Kit

## Applications



The standard curve is for the purpose of illustration only and should not be used to calculate unknowns. A standard curve should be generated each time the assay is performed.

## Specification

<b>Product Description</b>	IFNb (Mouse) ELISA Kit is a sandwich enzyme-linked immunosorbent assay for quantitative detection of mouse IFNb in serum, plasma, tissue homogenates, cell lysates, cell culture supernatants or other biological fluids.
<b>Suitable Sample</b>	Serum, plasma, tissue homogenates, cell lysates, cell culture supernatants or other biological fluids
<b>Sample Volume</b>	100 $\mu$ L
<b>Label</b>	HRP-conjugated
<b>Detection Method</b>	Colorimetric
<b>Assay Type</b>	Quantitative
<b>Calibration Range</b>	15.62 to 1000 pg/mL
<b>Reactivity</b>	Mouse
<b>Regulatory Status</b>	For research use only (RUO)
<b>Quality Control Testing</b>	Standard curve The standard curve is for the purpose of illustration only and should not be used to calculate unknowns. A standard curve should be generated each time the assay is performed.

**Storage Instruction**

Store at -20°C.  
Aliquot to avoid repeated freezing and thawing.

## Applications

- Quantification

## Gene Info — Ifnb1

<b>Entrez GeneID</b>	<a href="#">15977</a>
----------------------	-----------------------

<b>Gene Name</b>	Ifnb1
------------------	-------

<b>Gene Alias</b>	IFN-beta, IFNB, Ifb
-------------------	---------------------

<b>Gene Description</b>	interferon beta 1, fibroblast
-------------------------	-------------------------------

<b>Gene Ontology</b>	<a href="#">Hyperlink</a>
----------------------	---------------------------

<b>Gene Summary</b>	O
---------------------	---

<b>Other Designations</b>	OTTMUSP00000008111
---------------------------	--------------------