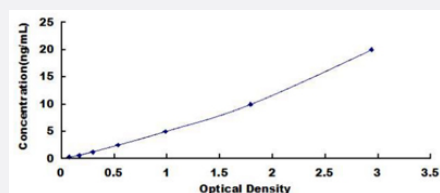


# HDGF (Human) ELISA Kit

Catalog # KA5417

Size 1 Kit

## Applications



The standard curve is for the purpose of illustration only and should not be used to calculate unknowns. A standard curve should be generated each time the assay is performed.

## Specification

<b>Product Description</b>	HDGF (Human) ELISA Kit is a sandwich enzyme-linked immunosorbent assay for quantitative detection of human HDGF in serum, plasma, tissue homogenates or other biological fluids.
<b>Suitable Sample</b>	Serum, plasma, tissue homogenates or other biological fluids
<b>Sample Volume</b>	100 $\mu$ L
<b>Label</b>	HRP-conjugated
<b>Detection Method</b>	Colorimetric
<b>Assay Type</b>	Quantitative
<b>Calibration Range</b>	0.312 to 20 ng/mL
<b>Reactivity</b>	Human
<b>Regulatory Status</b>	For research use only (RUO)
<b>Quality Control Testing</b>	Standard curve The standard curve is for the purpose of illustration only and should not be used to calculate unknowns. A standard curve should be generated each time the assay is performed.
<b>Storage Instruction</b>	Store at $-20^{\circ}\text{C}$ . Aliquot to avoid repeated freezing and thawing.

## Applications

- Quantification

## Gene Info — HDGF

Entrez GeneID	<a href="#">3068</a>
Gene Name	HDGF
Gene Alias	DKFZp686J1764, FLJ96580, HMG1L2
Gene Description	hepatoma-derived growth factor (high-mobility group protein 1-like)
Omim ID	<a href="#">600339</a>
Gene Ontology	<a href="#">Hyperlink</a>
Gene Summary	<p>This gene encodes a member of the hepatoma-derived growth factor family. The encoded protein has mitogenic and DNA-binding activity and may play a role in cellular proliferation and differentiation. This gene was thought initially to be located on chromosome X, however, that location has been determined to correspond to a related pseudogene. Alternatively spliced transcript variants encoding distinct isoforms have been described. [provided by RefSeq]</p>
Other Designations	OTTHUMP00000038721 hepatoma-derived growth factor