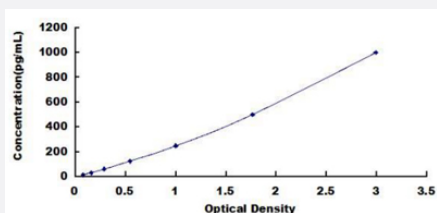


IFNa4 (Human) ELISA Kit

Catalog # KA5414 Size 1 Kit

Applications



The standard curve is for the purpose of illustration only and should not be used to calculate unknowns. A standard curve should be generated each time the assay is performed.

Specification

Product Description	IFNa4 (Human) ELISA Kit is a sandwich enzyme-linked immunosorbent assay for quantitative detection of human IFNa4 in serum, plasma, tissue homogenates, cell lysates, cell culture supernatants or other biological fluids.
Suitable Sample	Serum, plasma, tissue homogenates, cell lysates, cell culture supernatants or other biological fluids
Sample Volume	100 μ L
Label	HRP-conjugated
Detection Method	Colorimetric
Assay Type	Quantitative
Calibration Range	15.625 to 1000 pg/mL
Reactivity	Human
Regulatory Status	For research use only (RUO)
Quality Control Testing	Standard curve The standard curve is for the purpose of illustration only and should not be used to calculate unknowns. A standard curve should be generated each time the assay is performed.

Storage Instruction

Store at -20°C.
Aliquot to avoid repeated freezing and thawing.

Applications

- Quantification

Gene Info — IFNA4

Entrez GeneID	3441
Gene Name	IFNA4
Gene Alias	INFA4, MGC142200
Gene Description	interferon, alpha 4
Omim ID	147564
Gene Ontology	Hyperlink
Gene Summary	O
Other Designations	OTTHUMP00000021135 OTTHUMP00000045102

Pathway

- [Antigen processing and presentation](#)
- [Autoimmune thyroid disease](#)
- [Cytokine-cytokine receptor interaction](#)
- [Jak-STAT signaling pathway](#)
- [Natural killer cell mediated cytotoxicity](#)
- [Regulation of autophagy](#)
- [Toll-like receptor signaling pathway](#)