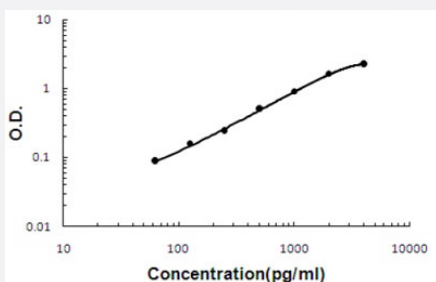


GREM2 (Monkey) ELISA Kit

Catalog # KA5398

Size 1 Kit

Applications



The standard curve is for the purpose of illustration only and should not be used to calculate unknowns. A standard curve should be generated each time the assay is performed.

Specification

Product Description

GREM2 (Monkey) ELISA Kit is a sandwich enzyme-linked immunosorbent assay for quantitative detection of monkey primate GREM2 in cell culture supernates, serum and plasma (heparin, EDTA).

Suitable Sample

Cell culture supernates, serum and plasma (heparin, EDTA)

Sample Volume

100 μ L

Label

HRP-conjugated

Detection Method

Colorimetric

Assay Type

Quantitative

Calibration Range

62.5 to 4000 pg/mL

Reactivity

Monkey

Regulatory Status

For research use only (RUO)

Quality Control Testing

Standard curve

The standard curve is for the purpose of illustration only and should not be used to calculate unknowns. A standard curve should be generated each time the assay is performed.

Storage Instruction

Store at 4°C for six months. For long term storage store at -20°C. Avoid repeated freezing and thawing.

Applications

- Quantification

Gene Info — GREM2

Entrez GeneID	708280
Gene Name	GREM2
Gene Alias	-
Gene Description	gremlin 2, cysteine knot superfamily, homolog (Xenopus laevis)
Gene Ontology	Hyperlink
Gene Summary	-
Other Designations	-