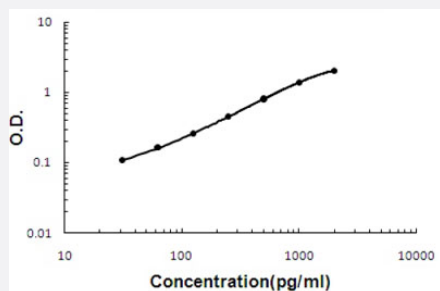


Gdf5 (Bovine) ELISA Kit

Catalog # KA5395 Size 1 Kit

Applications



The standard curve is for the purpose of illustration only and should not be used to calculate unknowns. A standard curve should be generated each time the assay is performed.

Specification

Product Description	Gdf5 (Bovine) ELISA Kit is a sandwich enzyme-linked immunosorbent assay for quantitative detection of bovine Gdf5 in cell culture supernates, serum and plasma (heparin, EDTA).
Suitable Sample	Cell culture supernates, serum and plasma (heparin, EDTA)
Sample Volume	100 μ L
Label	HRP-conjugated
Detection Method	Colorimetric
Assay Type	Quantitative
Calibration Range	31.2 to 2000 pg/mL
Reactivity	Bovine
Regulatory Status	For research use only (RUO)
Quality Control Testing	Standard curve The standard curve is for the purpose of illustration only and should not be used to calculate unknowns. A standard curve should be generated each time the assay is performed.
Storage Instruction	Store at 4°C for six months. For long term storage store at -20°C. Avoid repeated freezing and thawing.

Applications

- Quantification

Gene Info — GDF5

Entrez GeneID	539559
---------------	------------------------

Gene Name	GDF5
-----------	------

Gene Alias	-
------------	---

Gene Description	growth differentiation factor 5
------------------	---------------------------------

Gene Ontology	Hyperlink
---------------	---------------------------

Other Designations	-
--------------------	---