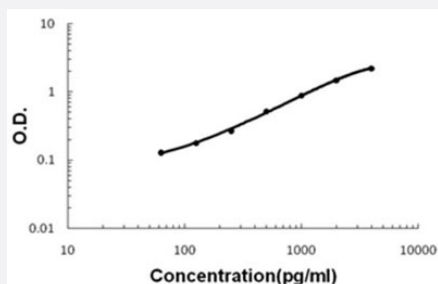


# CXCL14 (Monkey) ELISA Kit

Catalog # KA5391      Size 1 Kit

## Applications



The standard curve is for the purpose of illustration only and should not be used to calculate unknowns. A standard curve should be generated each time the assay is performed.

## Specification

<b>Product Description</b>	CXCL14 (Monkey) ELISA Kit is a sandwich enzyme-linked immunosorbent assay for quantitative detection of monkey primate CXCL14 in cell culture supernates, serum and plasma (heparin, EDTA).
<b>Suitable Sample</b>	Cell culture supernates, serum and plasma (heparin, EDTA)
<b>Sample Volume</b>	100 $\mu$ L
<b>Label</b>	HRP-conjugated
<b>Detection Method</b>	Colorimetric
<b>Assay Type</b>	Quantitative
<b>Calibration Range</b>	62.5 to 4000 pg/mL
<b>Regulatory Status</b>	For research use only (RUO)
<b>Quality Control Testing</b>	Standard curve The standard curve is for the purpose of illustration only and should not be used to calculate unknowns. A standard curve should be generated each time the assay is performed.
<b>Storage Instruction</b>	Store at 4°C for six months. For long term storage store at -20°C. Avoid repeated freezing and thawing.

## Applications

- Quantification

## Gene Info — LOC712076

Entrez GeneID	<a href="#">712076</a>
---------------	------------------------

Gene Name	LOC712076
-----------	-----------

Gene Alias	-
------------	---

Gene Description	similar to small inducible cytokine B14 precursor
------------------	---

Gene Ontology	<a href="#">Hyperlink</a>
---------------	---------------------------

Other Designations	-
--------------------	---