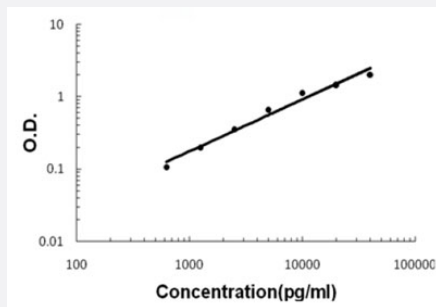


IGFBP7 (Monkey) ELISA Kit

Catalog # KA5384 Size 1 Kit

Applications



The standard curve is for the purpose of illustration only and should not be used to calculate unknowns. A standard curve should be generated each time the assay is performed.

Specification

Product Description	IGFBP7 (Monkey) ELISA Kit is a sandwich enzyme-linked immunosorbent assay for quantitative detection of monkey primate IGFBP7 in cell culture supernates, serum, plasma (heparin, EDTA) and urine.
Suitable Sample	Cell culture supernates, serum, plasma (heparin, EDTA) and urine
Sample Volume	100 μ L
Label	HRP-conjugated
Detection Method	Colorimetric
Assay Type	Quantitative
Calibration Range	625 to 40000 pg/mL
Reactivity	Monkey
Regulatory Status	For research use only (RUO)
Quality Control Testing	Standard curve The standard curve is for the purpose of illustration only and should not be used to calculate unknowns. A standard curve should be generated each time the assay is performed.

Storage Instruction

Store at 4°C for six months. For long term storage store at -20°C.
Avoid repeated freezing and thawing.

Applications

- Quantification

Gene Info — LOC693564

Entrez GeneID	693564
Gene Name	LOC693564
Gene Alias	-
Gene Description	similar to Insulin-like growth factor-binding protein 7 precursor (IGFBP-7) (IBP-7) (IGF-binding protein 7) (MAC25 protein) (Prostacyclin-stimulating factor) (PGI2-stimulating factor) (IGFBP-rP1)
Gene Ontology	Hyperlink
Other Designations	-