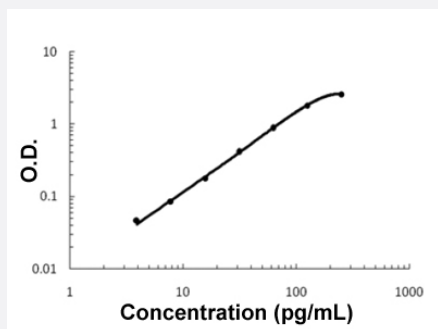


EDN1 (Horse) ELISA Kit

Catalog # KA5379 Size 1 Kit

Applications



The standard curve is for the purpose of illustration only and should not be used to calculate unknowns. A standard curve should be generated each time the assay is performed.

Specification

Product Description	EDN1 (Horse) ELISA Kit is a sandwich enzyme-linked immunosorbent assay for the quantitative measurement of horse EDN1.
Suitable Sample	Cell Culture Supernates, Plasma (EDTA, Heparin) and Serum
Sample Volume	100 μ L
Label	HRP-conjugate
Detection Method	Colorimetric
Assay Type	Quantitative
Calibration Range	3.9 to 250 pg/mL
Reactivity	Horse
Regulatory Status	For research use only (RUO)
Quality Control Testing	Standard curve The standard curve is for the purpose of illustration only and should not be used to calculate unknowns. A standard curve should be generated each time the assay is performed.
Storage Instruction	Store at 4°C for 6 months, at -20°C for 12 months. Avoid multiple freeze-thaw cycles.

Applications

- Quantification

Gene Info — LOC100034060

Entrez GeneID	100034060
---------------	---------------------------

Gene Name	LOC100034060
-----------	--------------

Gene Alias	-
------------	---

Gene Description	preproendothelin 1
------------------	--------------------

Gene Ontology	Hyperlink
---------------	---------------------------

Other Designations	-
--------------------	---