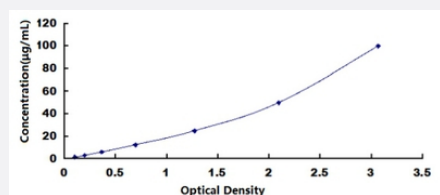


Alb (Guinea pig) ELISA Kit

Catalog # KA5321

Size 1 Kit

Applications



The standard curve is for the purpose of illustration only and should not be used to calculate unknowns. A standard curve should be generated each time the assay is performed.

Specification

Product Description	Alb (Guinea pig) ELISA Kit is a sandwich enzyme-linked immunosorbent assay for quantitative measurement of guinea pig Alb in plasma, serum and biological fluids.
Suitable Sample	Plasma, Serum and Biological fluid
Sample Volume	100 uL
Label	HRP-conjugated
Detection Method	Colorimetric
Assay Type	Quantitative
Calibration Range	1.56 - 100 ug/mL
Limit of Detection	0.48 ug/mL
Reactivity	Guinea pig
Regulatory Status	For research use only (RUO)
Quality Control Testing	Standard curve The standard curve is for the purpose of illustration only and should not be used to calculate unknowns. A standard curve should be generated each time the assay is performed.

Storage Instruction

Store TMB Substrate, Wash Buffer (30X concentrate) and the Stop Solution at 4°C upon receipt while the others should be at -20°C

Applications

- Quantification