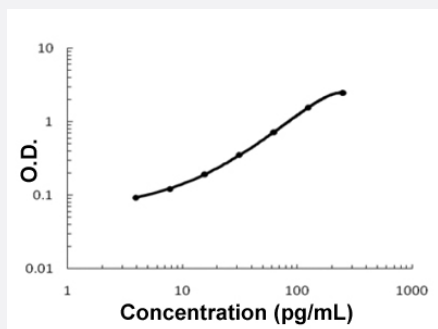


# EDN1 (Rabbit) ELISA Kit

Catalog # KA5289      Size 1 Kit

## Applications



The standard curve is for the purpose of illustration only and should not be used to calculate unknowns. A standard curve should be generated each time the assay is performed.

## Specification

<b>Product Description</b>	EDN1 (Rabbit) ELISA Kit is a sandwich enzyme-linked immunosorbent assay for the quantitative measurement of rabbit EDN1.
<b>Suitable Sample</b>	Cell Culture Supernates, Plasma (EDTA, Heparin) and Serum
<b>Sample Volume</b>	100 uL
<b>Label</b>	HRP-conjugated
<b>Detection Method</b>	Colorimetric
<b>Assay Type</b>	Quantitative
<b>Calibration Range</b>	3.9 to 250 pg/mL
<b>Reactivity</b>	Rabbit
<b>Regulatory Status</b>	For research use only (RUO)
<b>Quality Control Testing</b>	Standard curve The standard curve is for the purpose of illustration only and should not be used to calculate unknowns. A standard curve should be generated each time the assay is performed.
<b>Storage Instruction</b>	Store at 4°C for 6 months, at -20°C for 12 months. Avoid multiple freeze-thaw cycles.

## Applications

- Quantification

## Gene Info — ET-1

Entrez GeneID	<a href="#">100009270</a>
---------------	---------------------------

Gene Name	ET-1
-----------	------

Gene Alias	Edn1
------------	------

Gene Description	endothelin-1
------------------	--------------

Gene Ontology	<a href="#">Hyperlink</a>
---------------	---------------------------

Other Designations	endothelin 1
--------------------	--------------