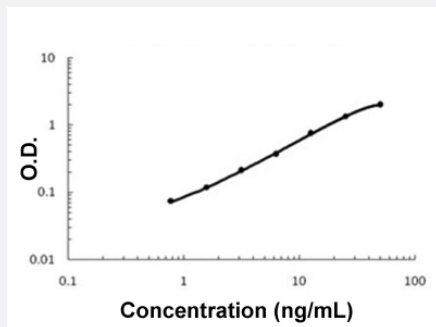


# CDH2 (Dog) ELISA Kit

Catalog # KA5285      Size 1 Kit

## Applications



The standard curve is for the purpose of illustration only and should not be used to calculate unknowns. A standard curve should be generated each time the assay is performed.

## Specification

<b>Product Description</b>	CDH2 (Dog) ELISA Kit is a sandwich enzyme-linked immunosorbent assay for the quantitative measurement of dog CDH2.
<b>Suitable Sample</b>	Cell Culture Supernates, Plasma (EDTA, Heparin) and Serum
<b>Sample Volume</b>	100 $\mu$ L
<b>Label</b>	HRP-conjugated
<b>Detection Method</b>	Colorimetric
<b>Assay Type</b>	Quantitative
<b>Calibration Range</b>	0.78 to 50 ng/mL
<b>Reactivity</b>	Dog
<b>Regulatory Status</b>	For research use only (RUO)
<b>Quality Control Testing</b>	Standard curve The standard curve is for the purpose of illustration only and should not be used to calculate unknowns. A standard curve should be generated each time the assay is performed.
<b>Storage Instruction</b>	Store at 4°C for 6 months, at -20°C for 12 months. Avoid multiple freeze-thaw cycles.

## Applications

- Quantification

## Gene Info — CDH2

Entrez GeneID	<a href="#">480169</a>
---------------	------------------------

Gene Name	CDH2
-----------	------

Gene Alias	NCAD
------------	------

Gene Description	cadherin 2, type 1, N-cadherin (neuronal)
------------------	---

Gene Ontology	<a href="#">Hyperlink</a>
---------------	---------------------------

Gene Summary	-
--------------	---

Other Designations	neural cadherin
--------------------	-----------------