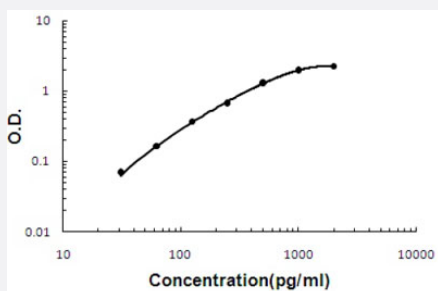


FGF1 (Monkey) ELISA Kit

Catalog # KA5255 Size 1 Kit

Applications



The standard curve is for the purpose of illustration only and should not be used to calculate unknowns. A standard curve should be generated each time the assay is performed.

Specification

Product Description	FGF1 (Monkey) ELISA Kit is a sandwich enzyme-linked immunosorbent assay for quantitative detection of monkey primate FGF1 in cell culture supernates, serum and plasma (heparin, EDTA).
Suitable Sample	Cell culture supernates, serum and plasma (heparin, EDTA)
Sample Volume	100 μ L
Label	HRP-conjugated
Detection Method	Colorimetric
Assay Type	Quantitative
Calibration Range	31.2 to 2000 pg/mL
Reactivity	Monkey
Regulatory Status	For research use only (RUO)
Quality Control Testing	Standard curve The standard curve is for the purpose of illustration only and should not be used to calculate unknowns. A standard curve should be generated each time the assay is performed.
Storage Instruction	Store at 4°C for six months. For long term storage store at -20°C. Avoid repeated freezing and thawing.

Applications

- Quantification

Gene Info — FGF1

Entrez GeneID	705970
Gene Name	FGF1
Gene Alias	-
Gene Description	fibroblast growth factor 1 (acidic)
Gene Ontology	Hyperlink
Other Designations	-