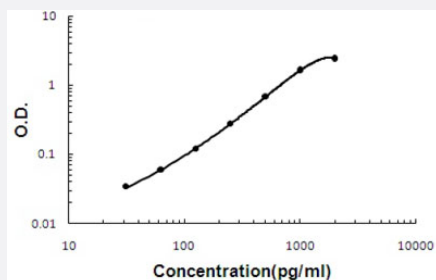


BMP2 (Pig) ELISA Kit

Catalog # KA5248 Size 1 Kit

Applications



The standard curve is for the purpose of illustration only and should not be used to calculate unknowns. A standard curve should be generated each time the assay is performed.

Specification

Product Description	BMP2 (Pig) ELISA Kit is a sandwich enzyme-linked immunosorbent assay for quantitative detection of pig porcine BMP-2 in bone tissue, cell culture supernates and serum.
Suitable Sample	Bone tissue, cell culture supernates and serum
Sample Volume	100 uL
Label	HRP-conjugated
Detection Method	Colorimetric
Assay Type	Quantitative
Calibration Range	31.2 to 2000 pg/mL
Reactivity	Pig
Regulatory Status	For research use only (RUO)
Quality Control Testing	Standard curve The standard curve is for the purpose of illustration only and should not be used to calculate unknowns. A standard curve should be generated each time the assay is performed.
Storage Instruction	Store at 4°C for six months. For long term storage store at -20°C. Avoid repeated freezing and thawing.

Applications

- Quantification

Gene Info — LOC100157103

Entrez GeneID	100157103
Gene Name	LOC100157103
Gene Alias	-
Gene Description	similar to BMP2 protein
Gene Ontology	Hyperlink
Other Designations	-