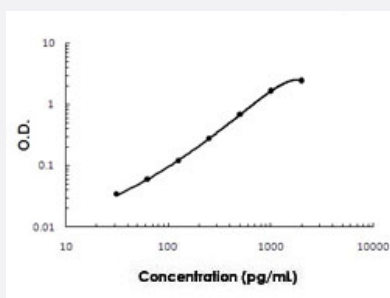


BMP2 ELISA Kit

Catalog # KA5236 Size 1 Kit

Applications



The standard curve is for the purpose of illustration only and should not be used to calculate unknowns. A standard curve should be generated each time the assay is performed.

Specification

Product Description	BMP2 ELISA Kit is a sandwich enzyme-linked immunosorbent assay for the quantitative measurement of bovine BMP2 in bone tissue, cell culture supernates and serum.
Suitable Sample	Bone tissue, Cell culture supernates and Serum
Sample Volume	100 uL
Label	HRP-conjugated
Detection Method	Colorimetric
Assay Type	Quantitative
Calibration Range	31.2 to 2000 pg/mL
Reactivity	Bovine
Regulatory Status	For research use only (RUO)
Quality Control Testing	Standard curve The standard curve is for the purpose of illustration only and should not be used to calculate unknowns. A standard curve should be generated each time the assay is performed.
Storage Instruction	Store at 4°C for 6 months, at -20°C for 12 months. Avoid multiple freeze-thaw cycles.

Applications

- Quantification

Gene Info — BMP2

Entrez GeneID	615037
---------------	------------------------

Gene Name	BMP2
-----------	------

Gene Alias	MGC159940
------------	-----------

Gene Description	bone morphogenetic protein 2
------------------	------------------------------

Gene Ontology	Hyperlink
---------------	---------------------------

Other Designations	-
--------------------	---