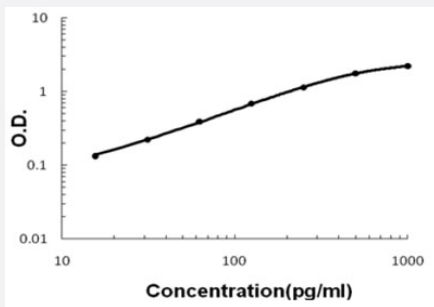


Gdf2 (Mouse) ELISA Kit

Catalog # KA5214 Size 1 Kit

Applications



The standard curve is for the purpose of illustration only and should not be used to calculate unknowns. A standard curve should be generated each time the assay is performed.

Specification

Product Description	Gdf2 (Mouse) ELISA Kit is a sandwich enzyme-linked immunosorbent assay for quantitative detection of mouse Bmp9 in bone tissue, cell culture supernates, serum and plasma (heparin, EDTA).
Suitable Sample	Bone tissue, cell culture supernates, serum and plasma (heparin, EDTA)
Sample Volume	100 uL
Label	HRP-conjugated
Detection Method	Colorimetric
Assay Type	Quantitative
Calibration Range	15.6 to 1000 pg/mL
Reactivity	Mouse
Regulatory Status	For research use only (RUO)
Quality Control Testing	Standard curve The standard curve is for the purpose of illustration only and should not be used to calculate unknowns. A standard curve should be generated each time the assay is performed.
Storage Instruction	Store at 4°C for six months. For long term storage store at -20°C. Avoid repeated freezing and thawing.

Applications

- Quantification

Gene Info — Gdf2

Entrez GeneID	12165
Gene Name	Gdf2
Gene Alias	Bmp9, MGC124253, MGC124255, MGC124256
Gene Description	growth differentiation factor 2
Gene Ontology	Hyperlink
Other Designations	bone morphogenetic protein 9