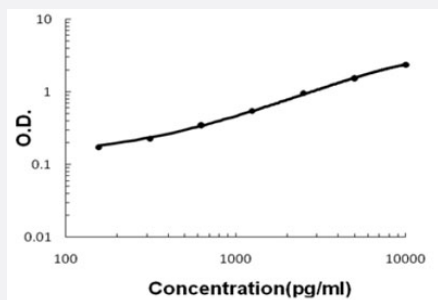


Bmp6 (Mouse) ELISA Kit

Catalog # KA5212 Size 1 Kit

Applications



The standard curve is for the purpose of illustration only and should not be used to calculate unknowns. A standard curve should be generated each time the assay is performed.

Specification

Product Description	Bmp6 (Mouse) ELISA Kit is a sandwich enzyme-linked immunosorbent assay for quantitative detection of mouse Bmp6 in bone tissue, cell culture supernates and serum.
Suitable Sample	Bone tissue, cell culture supernates and serum
Sample Volume	100 μ L
Label	HRP-conjugated
Detection Method	Colorimetric
Assay Type	Quantitative
Calibration Range	156 to 10000 pg/mL
Reactivity	Mouse
Regulatory Status	For research use only (RUO)
Storage Instruction	Store at 4°C for 6 months, at -20°C for 12 months. Avoid repeated freezing and thawing.

Applications

- Quantification

Gene Info — Bmp6

Entrez GeneID	12161
---------------	-----------------------

Gene Name	Bmp6
-----------	------

Gene Alias	D13Wsu115e, Vgr-1, Vgr1
------------	-------------------------

Gene Description	bone morphogenetic protein 6
------------------	------------------------------

Gene Ontology	Hyperlink
---------------	---------------------------

Other Designations	-
--------------------	---