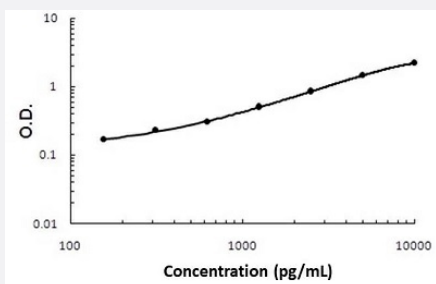


# CHL1 (Human) ELISA Kit

Catalog # KA5206

Size 1 Kit

## Applications



The standard curve is for the purpose of illustration only and should not be used to calculate unknowns. A standard curve should be generated each time the assay is performed.

## Specification

### Product Description

CHL1 (Human) ELISA Kit is a sandwich enzyme-linked immunosorbent assay for quantitative measurement of human CHL1 in cell culture supernates, cell lysates, serum and plasma (heparin or EDTA).

### Suitable Sample

Cell culture supernates, Cell Lysates, Serum, Plasma (heparin, EDTA)

### Sample Volume

100  $\mu$ L

### Label

HRP-conjugated

### Detection Method

Colorimetric

### Assay Type

Quantitative

### Calibration Range

156 - 10000 pg/mL

### Reactivity

Human

### Regulatory Status

For research use only (RUO)

### Quality Control Testing

Standard curve

The standard curve is for the purpose of illustration only and should not be used to calculate unknowns. A standard curve should be generated each time the assay is performed.

### Storage Instruction

Store at 4°C for 6 months, at -20°C for 12 months. Avoid multiple freeze-thaw cycles.

## Applications

- Quantification

## Gene Info — CHL1

Entrez GeneID	<a href="#">10752</a>
Gene Name	CHL1
Gene Alias	CALL, FLJ44930, L1CAM2, MGC132578
Gene Description	cell adhesion molecule with homology to L1CAM (close homolog of L1)
Omim ID	<a href="#">607416</a>
Gene Ontology	<a href="#">Hyperlink</a>
Gene Summary	The protein encoded by this gene is a member of the L1 gene family of neural cell adhesion molecules. It is a neural recognition molecule that may be involved in signal transduction pathways. The deletion of one copy of this gene may be responsible for mental defects in patients with 3p- syndrome. Several alternatively spliced transcript variants of this gene have been described, but their full length nature is not known. [provided by RefSeq]
Other Designations	L1 cell adhesion molecule 2 cell adhesion molecule L1-like cell adhesion molecule with homology to L1CAM cell adhesion molecule with homology to L1CAM (close homologue of L1) neural cell adhesion molecule

## Disease

- [Cleft Lip](#)
- [Cleft Palate](#)
- [Cognition](#)
- [Genetic Predisposition to Disease](#)
- [Neoplasms](#)
- [Ovarian cancer](#)
- [Ovarian Neoplasms](#)
- [Schizophrenia](#)

- [Tobacco Use Disorder](#)