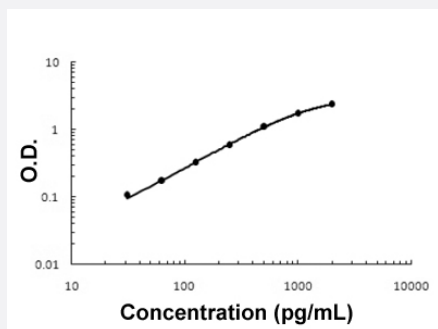


# HGFAC (Human) ELISA Kit

Catalog # KA5204

Size 1 Kit

## Applications



The standard curve is for the purpose of illustration only and should not be used to calculate unknowns. A standard curve should be generated each time the assay is performed.

## Specification

<b>Product Description</b>	HGFAC (Human) ELISA Kit is a sandwich enzyme-linked immunosorbent assay for the quantitative measurement of human HGFAC.
<b>Suitable Sample</b>	Cell Culture Supernates, Cell Lysates, Plasma (EDTA, Heparin) and Serum
<b>Sample Volume</b>	100 $\mu$ L
<b>Label</b>	HRP-conjugate
<b>Detection Method</b>	Colorimetric
<b>Assay Type</b>	Quantitative
<b>Calibration Range</b>	31.2 to 2000 pg/mL
<b>Reactivity</b>	Human
<b>Regulatory Status</b>	For research use only (RUO)
<b>Quality Control Testing</b>	Standard curve The standard curve is for the purpose of illustration only and should not be used to calculate unknowns. A standard curve should be generated each time the assay is performed.
<b>Storage Instruction</b>	Store at 4°C for 6 months, at -20°C for 12 months. Avoid multiple freeze-thaw cycles.

## Applications

- Quantification

## Gene Info — HGFAC

Entrez GeneID	<a href="#">3083</a>
Protein Accession#	<a href="#">Q04756</a>
Gene Name	HGFAC
Gene Alias	HGFA, MGC138395, MGC138397
Gene Description	HGF activator
Omim ID	<a href="#">604552</a>
Gene Ontology	<a href="#">Hyperlink</a>
Gene Summary	The protein encoded by this gene belongs to peptidase family S1. It is first synthesized as an inactive single-chain precursor before being activated to a heterodimeric form by endoproteolytic processing. It acts as serine protease that converts hepatocyte growth factor to the active form. [provided by RefSeq]
Other Designations	OTTHUMP00000115316

## Disease

- [Genetic Predisposition to Disease](#)
- [Hyperparathyroidism](#)