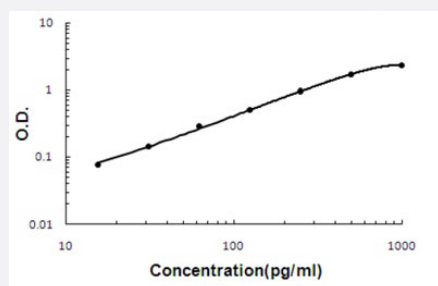


S100a13 (Mouse) ELISA Kit

Catalog # KA5195 Size 1 Kit

Applications



The standard curve is for the purpose of illustration only and should not be used to calculate unknowns. A standard curve should be generated each time the assay is performed.

Specification

Product Description	S100a13 (Mouse) ELISA Kit is a sandwich enzyme-linked immunosorbent assay for quantitative detection of mouse S100a13 in cell culture supernatants, cell lysates, serum and plasma (heparin, EDTA).
Suitable Sample	Cell Culture Supernatants, Cell Lysates, Plasma (heparin, EDTA) and Serum.
Sample Volume	100 μ L
Label	HRP-conjugated
Detection Method	Colorimetric
Assay Type	Quantitative
Calibration Range	15.6 to 1000 pg/mL
Reactivity	Mouse
Regulatory Status	For research use only (RUO)
Quality Control Testing	Standard curve The standard curve is for the purpose of illustration only and should not be used to calculate unknowns. A standard curve should be generated each time the assay is performed.

Storage Instruction

Store at 4°C for six months. For long term storage store at -20°C.
Avoid repeated freezing and thawing.

Applications

- Quantification

Gene Info — S100a13

Entrez GeneID	20196
----------------------	-----------------------

Gene Name	S100a13
------------------	---------

Gene Alias	-
-------------------	---

Gene Description	S100 calcium binding protein A13
-------------------------	----------------------------------

Gene Ontology	Hyperlink
----------------------	---------------------------

Other Designations	OTTMUSP00000024894 S100 calcium-binding protein A13
---------------------------	---