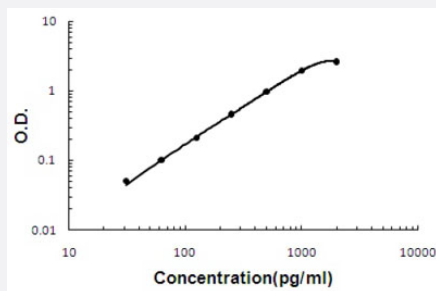


FOLR2 (Human) ELISA Kit

Catalog # KA5177 Size 1 Kit

Applications



The standard curve is for the purpose of illustration only and should not be used to calculate unknowns. A standard curve should be generated each time the assay is performed.

Specification

Product Description	FOLR2 (Human) ELISA Kit is a sandwich enzyme-linked immunosorbent assay for quantitative detection of human FOLR2 in cell culture supernates and serum.
Suitable Sample	Cell culture supernates and serum
Sample Volume	100 uL
Label	HRP-conjugated
Detection Method	Colorimetric
Assay Type	Quantitative
Calibration Range	31.2 to 2000 pg/mL
Reactivity	Human
Regulatory Status	For research use only (RUO)
Quality Control Testing	Standard curve The standard curve is for the purpose of illustration only and should not be used to calculate unknowns. A standard curve should be generated each time the assay is performed.
Storage Instruction	Store at 4°C for six months. For long term storage store at -20°C. Avoid repeated freezing and thawing.

Applications

- Quantification

Gene Info — FOLR2

Entrez GeneID	2350
Gene Name	FOLR2
Gene Alias	BETA-HFR, FBP/PL-1, FR-BETA, FR-P3
Gene Description	folate receptor 2 (fetal)
Omim ID	136425
Gene Ontology	Hyperlink
Gene Summary	The protein encoded by this gene is a member of the folate receptor (FOLR) family, and these genes exist in a cluster on chromosome 11. Members of this gene family have a high affinity for folic acid and for several reduced folic acid derivatives, and they mediate delivery of 5-methyltetrahydrofolate to the interior of cells. This protein has a 68% and 79% sequence homology with the FOLR1 and FOLR3 proteins, respectively. Although this protein was originally thought to be specific to placenta, it can also exist in other tissues, and it may play a role in the transport of methotrexate in synovial macrophages in rheumatoid arthritis patients. Multiple transcript variants that encode the same protein have been found for this gene. [provided by RefSeq]
Other Designations	folate receptor 2 folate receptor, beta folate-binding protein, fetal/placental

Disease

- [Cardiovascular Diseases](#)
- [Cleft Lip](#)
- [Cleft Palate](#)
- [Diabetes Mellitus](#)
- [Edema](#)
- [Genetic Predisposition to Disease](#)
- [Heart Defects](#)

- [Hyperparathyroidism](#)
- [Meningomyelocele](#)
- [Neural Tube Defects](#)
- [Spinal Dysraphism](#)