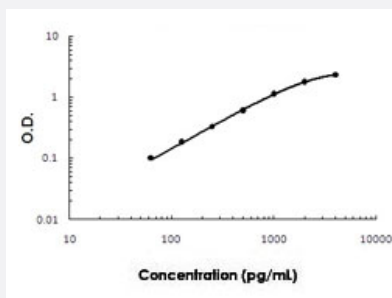


# ULBP2 (Human) ELISA Kit

Catalog # KA5171      Size 1 Kit

## Applications



The standard curve is for the purpose of illustration only and should not be used to calculate unknowns. A standard curve should be generated each time the assay is performed.

## Specification

<b>Product Description</b>	ULBP2 (Human) ELISA Kit is a sandwich enzyme-linked immunosorbent assay for the quantitative measurement of human ULBP2 in cell culture supernates, cell lysates, serum and plasma (heparin, EDTA).
<b>Suitable Sample</b>	Cell culture supernates, Cell lysates, Serum and Plasma (heparin, EDTA)
<b>Sample Volume</b>	100 $\mu$ L
<b>Label</b>	HRP-conjugated
<b>Detection Method</b>	Colorimetric
<b>Assay Type</b>	Quantitative
<b>Calibration Range</b>	62.5 to 4000 pg/mL
<b>Reactivity</b>	Human
<b>Regulatory Status</b>	For research use only (RUO)
<b>Quality Control Testing</b>	Standard curve The standard curve is for the purpose of illustration only and should not be used to calculate unknowns. A standard curve should be generated each time the assay is performed.
<b>Storage Instruction</b>	Store at 4°C for 6 months, at -20°C for 12 months. Avoid multiple freeze-thaw cycles.

## Applications

- Quantification

## Gene Info — ULBP2

Entrez GeneID	<a href="#">80328</a>
Gene Name	ULBP2
Gene Alias	N2DL2, RAET1H
Gene Description	UL16 binding protein 2
Omim ID	<a href="#">605698</a>
Gene Ontology	<a href="#">Hyperlink</a>
Other Designations	ALCAN-alpha NKG2D ligand 2 OTTHUMP00000017408 UL16-binding protein 2 retinoic acid early transcript 1 H

## Pathway

- [Natural killer cell mediated cytotoxicity](#)

## Disease

- [Genetic Predisposition to Disease](#)