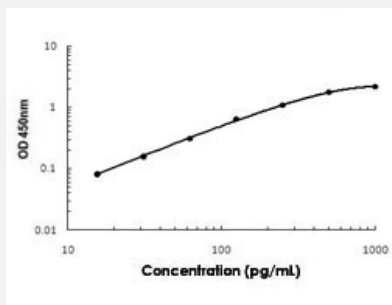


# TREML1 (Human) ELISA Kit

Catalog # KA5170      Size 1 Kit

## Applications



The standard curve is for the purpose of illustration only and should not be used to calculate unknowns. A standard curve should be generated each time the assay is performed.

## Specification

<b>Product Description</b>	TREML1 (Human) ELISA Kit is a sandwich enzyme-linked immunosorbent assay for the quantitative measurement of human TREML1 in cell culture supernates, cell lysates, serum and plasma (heparin, EDTA).
<b>Suitable Sample</b>	Cell culture supernates, Cell lysates, Serum and Plasma (heparin, EDTA)
<b>Sample Volume</b>	100 uL
<b>Label</b>	HRP-conjugated
<b>Detection Method</b>	Colorimetric
<b>Assay Type</b>	Quantitative
<b>Calibration Range</b>	15.6 to 1000 pg/mL
<b>Reactivity</b>	Human
<b>Regulatory Status</b>	For research use only (RUO)
<b>Quality Control Testing</b>	Standard curve The standard curve is for the purpose of illustration only and should not be used to calculate unknowns. A standard curve should be generated each time the assay is performed.
<b>Storage Instruction</b>	Store at 4°C for 6 months, at -20°C for 12 months. Avoid multiple freeze-thaw cycles.

## Applications

- Quantification

## Gene Info — TREML1

Entrez GeneID	<a href="#">340205</a>
Gene Name	TREML1
Gene Alias	GLTL1825, MGC119173, PRO3438, TLT-1, TLT1, dJ238O23.3
Gene Description	triggering receptor expressed on myeloid cells-like 1
Omim ID	<a href="#">609714</a>
Gene Ontology	<a href="#">Hyperlink</a>
Gene Summary	TREML1 is located in a gene cluster on chromosome 6 with the single Ig variable (IgV) domain activating receptors TREM1 (MIM 605085) and TREM2 (MIM 605086), but it has distinct structural and functional properties. TREML1 enhances calcium signaling in an SHP2 (PTPN11; MIM 176876)-dependent manner (Allcock et al., 2003 [PubMed 12645956]; Barrow et al., 2004 [PubMed 15128762]).[supplied by OMIM]
Other Designations	OTTHUMP00000017858 TREM-like transcript 1