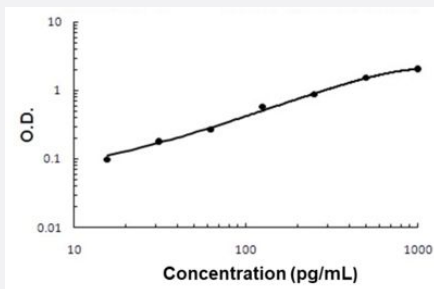


Rspo3 (Mouse) ELISA Kit

Catalog # KA5159 Size 1 Kit

Applications



The standard curve is for the purpose of illustration only and should not be used to calculate unknowns. A standard curve should be generated each time the assay is performed.

Specification

Product Description	Rspo3 (Mouse) ELISA Kit is a sandwich enzyme-linked immunosorbent assay for quantitative measurement of mouse Rspo3 in cell culture supernates, cell lysates, serum and plasma (heparin or EDTA).
Suitable Sample	Cell culture supernates, Cell Lysates, Serum, Plasma (heparin, EDTA)
Sample Volume	100 μ L
Label	HRP-conjugated
Detection Method	Colorimetric
Assay Type	Quantitative
Calibration Range	15.6 - 1000 pg/mL
Reactivity	Mouse
Regulatory Status	For research use only (RUO)
Quality Control Testing	Standard curve The standard curve is for the purpose of illustration only and should not be used to calculate unknowns. A standard curve should be generated each time the assay is performed.
Storage Instruction	Store at 4°C for 6 months, at -20°C for 12 months. Avoid multiple freeze-thaw cycles.

Applications

- Quantification

Gene Info — Rspo3

Entrez GeneID	72780
---------------	-----------------------

Gene Name	Rspo3
-----------	-------

Gene Alias	2810459H04Rik, AW742308, Cristin1, MGC118442, Thsd2
------------	---

Gene Description	R-spondin 3 homolog (Xenopus laevis)
------------------	--------------------------------------

Gene Ontology	Hyperlink
---------------	---------------------------

Gene Summary	type I
--------------	--------

Other Designations	R-spondin 3 cabriolet cristin 1 thrombospondin, type I, domain 2
--------------------	--