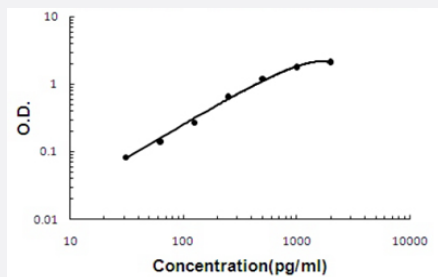


RSPO4 (Human) ELISA Kit

Catalog # KA5146 Size 1 Kit

Applications



The standard curve is for the purpose of illustration only and should not be used to calculate unknowns. A standard curve should be generated each time the assay is performed.

Specification

Product Description	RSPO4 (Human) ELISA Kit is a sandwich enzyme-linked immunosorbent assay for quantitative detection of human R-Spondin-4 in cell culture supernatants, cell lysates, serum and plasma (heparin, EDTA).
Suitable Sample	Cell Culture Supernatants, Cell Lysates, Plasma (heparin, EDTA) and Serum.
Sample Volume	100 μ L
Label	HRP-conjugated
Detection Method	Colorimetric
Assay Type	Quantitative
Calibration Range	31.2 to 2000 pg/mL
Reactivity	Human
Regulatory Status	For research use only (RUO)
Storage Instruction	Store at 4°C for six months. For long term storage store at -20°C. Avoid repeated freezing and thawing.

Applications

- Quantification

Gene Info — RSPO4

Entrez GeneID	343637
Gene Name	RSPO4
Gene Alias	C20orf182, CRISTIN4, FLJ16018, dJ824F16.3
Gene Description	R-spondin family, member 4
Omim ID	206800 610573
Gene Ontology	Hyperlink
Gene Summary	This gene encodes a member of the R-spondin family of proteins that share a common domain organization consisting of a signal peptide, cysteine-rich/furin-like domain, thrombospondin domain and a C-terminal basic region. The encoded protein may be involved in activation of Wnt/beta-catenin signaling pathways. Mutations in this gene are associated with anonychia congenital. Alternative splicing results in multiple transcript variants
Other Designations	OTTHUMP00000029946 OTTHUMP00000038949